

MATRIX®

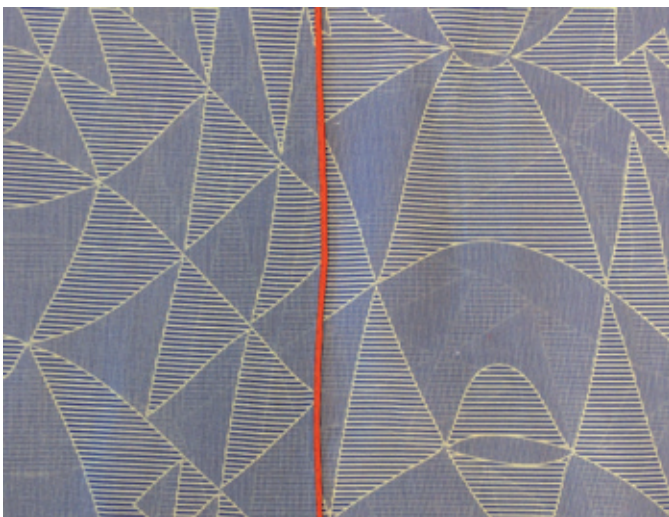
Winterkollektion 2017/18

CALYPSO



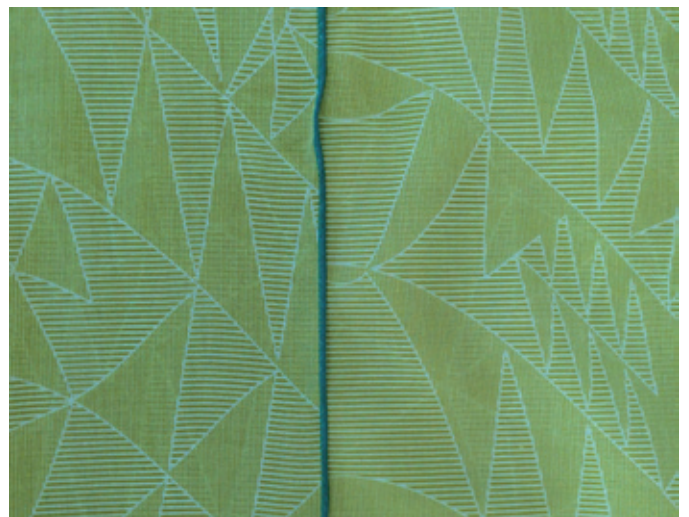
Design: Matrix Basel
Masse: 143 × 198 cm
Material: 100% Baumwolle
Produktion: Digitaldruck
Spezialität: handrouliert
Umfang: 4 Kolorits
Pflege: Handwäsche

01



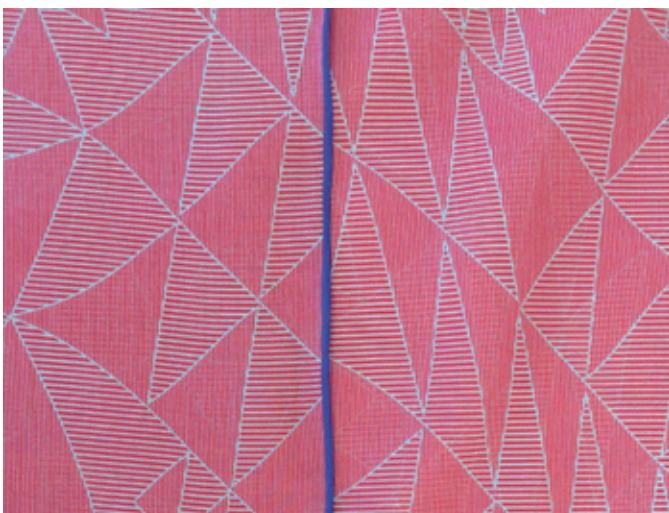
kornblume, muschel, Rand orange

02



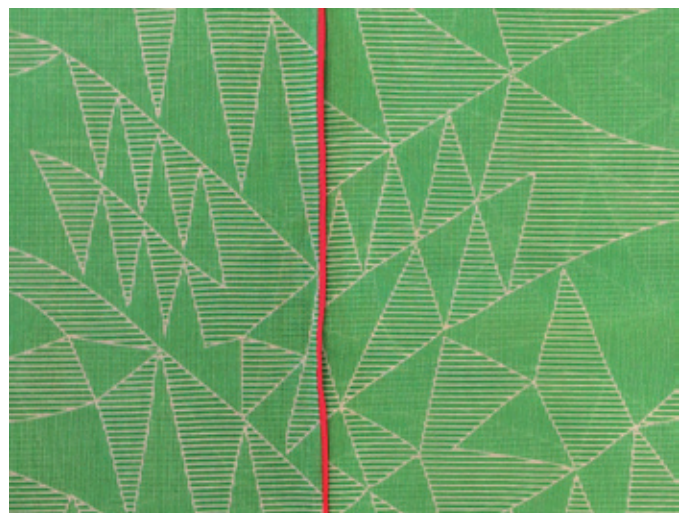
limette, elfenbein, Rand lagune

03



rot, flieder, Rand blau

04



gras, puder, Rand rot